



The all new
SYNERGY

We've **changed everything**
but our name

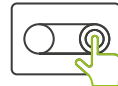
SYNERGY



High performance



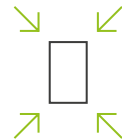
Stainless steel heat exchanger



New digital touchpad interface



7 years warranty as standard



Compact design



Easy installation and maintenance



For over 40 years, Vokèra by Riello has been producing heating appliances that have been designed by engineers for engineers.

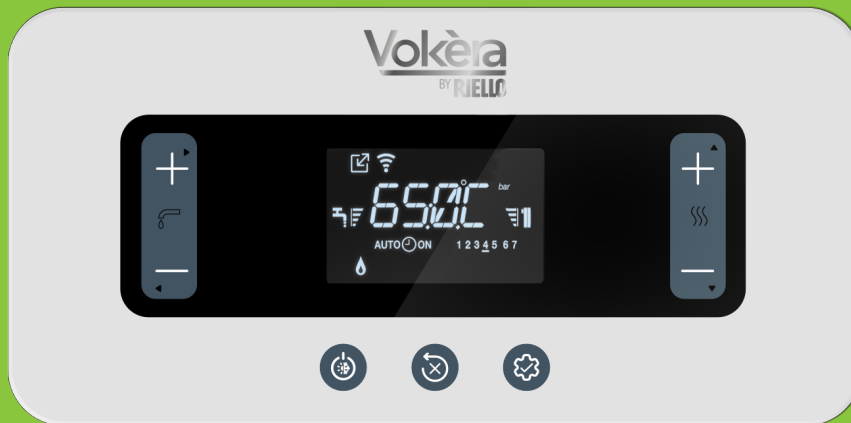
The all new **Vokèra Synergy** is packed with installer-focused features and cutting-edge technology to help redefine the mid-tier boiler market.

Available in six models, three combi and three system, it boasts a 1:10 modulation ratio, ensuring lower gas consumption and emissions for enhanced energy efficiency. This means the boiler can fine-tune its output to match the exact heating demand, preventing wasteful on/off cycling.

Its new digital modulating circulator further optimises performance by intelligently adjusting water flow rates through the heating system, while the stainless-steel heat exchanger guarantees exceptional heat transfer and long-lasting durability.

Vokèra understands that installer satisfaction is key. That is why the Synergy range prioritises features that simplify every step of the installation process. The universal pipework (DIN) layout allows for easy boiler replacements. A new condensate siphon and safety valve manifold further optimise installation and maintenance simplification.

Being 'hybrid-ready', the Synergy seamlessly integrates into multi-energy systems through the 'Hi, Comfort' platform, making it a versatile choice for modern '**future-proofed**' homes. It is among the most compact and lightweight in its class, weighing just 28kg or 30kg (depending on the model), making transportation and handling effortless.



.....
**Domestic
 Hot Water
 temperature
 setpoint
 regulation +/-**

.....
**Central Heating
 temperature
 setpoint
 regulation +/-**







.....
**Boiler operation status
 (OFF/SUMMER/WINTER)**

.....
**RESET of any alarm
 status/vent cycle
 interruption**

.....
**INFO/ ENTER/
 Parameters MENU**

Stylish Digital Touchpad Interface

Communication through icons

- | | |
|-------------------------------------------------------------------------------------------------------------|-------------------------------------------------------------------------------------------------------------------------------------|
|  DHW request ongoing |  Generic alarm |
|  CH water pressure alarm |  Maintenance - flashing with bell icon for alarm |
|  CH request ongoing |  Flame presence or flame block |

The Synergy features a **new digital touchpad interface characterised by an eye-catching design**, in line with the current aesthetic standards. Designed with particular attention to ease of use, the control panel of the Synergy provides **user-friendly access to all system settings and parameters** through a simple "touch" on seven points of its surface. **Each touch activates a buzzer**, that generates acoustic feedback as a confirmation of the operation. It also features easy to lock buttons so cleaning does not alter any settings.

QUICK & EASY INSTALLATION

All outputs are cupboard fit and weigh 30kg or less

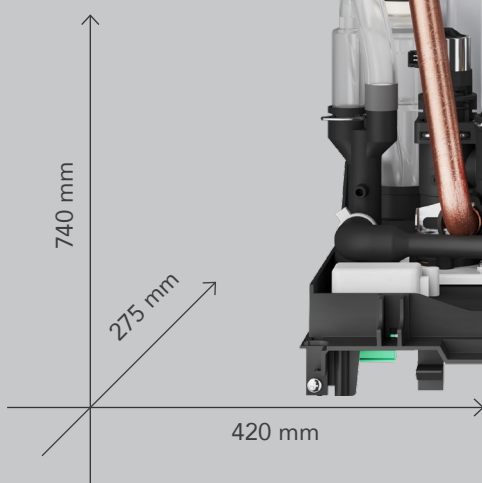


Same size across the entire range. Even the 35kW model has a depth of only 275mm!



› New stainless steel heat exchanger with completely renewed adaptive combustion control ACC

› "High performance" DHW plate heat exchanger developed in house



- › New flue flange featuring fast and safe, click-fit connections.
- › Low NOx emissions: Class 6 (EN 15502)
- › High modulation ratio 1:10 on the whole range, for high energy saving
- › Seasonal Space Heating Efficiency 94%

- › Expansion vessel 9 litres
- › Top cover and bottom shelf made of new co-molded materials to help durability and strength
- › Digital DC low energy circulator
- › New hydraulic group with DIN type connections, sequence for easy replacement



High efficiency



Quick and stable hot water



Low noise operation



Easy handling and transportation



Quick and easy installation



Frontal access to components



Hybrid ready as an option

New adaptive electronic combustion control

Equipped with the very latest version of the intelligent combustion control system ACC (Active Combustion Control), which **can automatically adapt to the fuel (natural gas or LPG)** without the use of conversion kits. **This innovative and sophisticated combustion control allows self-adjustment of combustion**, eliminating the need for initial calibration. The ACC system also enables the appliance to **automatically adapt to any changes in gas quality**, in real time, thereby, ensuring that combustion efficiency is maintained, **whilst harmful emissions are minimised**.

High performance DHW plate heat exchanger

The high performance domestic hot water (DHW) heat exchanger, developed in-house, offers **excellent comfort, along with rapid set point attainment and temperature stability during DHW production**.

Silent operation

The Synergy boiler range is designed for ultra-quiet operation, **minimising noise to ensure a peaceful home environment**. This silent performance is achieved without compromising the boilers high efficiency and advanced functionality, making it a discreet yet powerful heating solution.

Ease of installation and maintenance

Engineered for ease of installation and maintenance, featuring a **universal pipework layout** and **simplified commissioning process**. These installer-friendly design elements, along with accessible components and **straightforward servicing**, make the Synergy range both efficient to install and easy to maintain, saving time and effort for installers.

Integration in hybrid systems

Hybrid-ready, designed to **seamlessly integrate** into **multi-energy systems**. This flexibility allows it to work efficiently alongside other energy sources, making it an ideal choice for future-proofing homes with modern sustainable heating solutions.

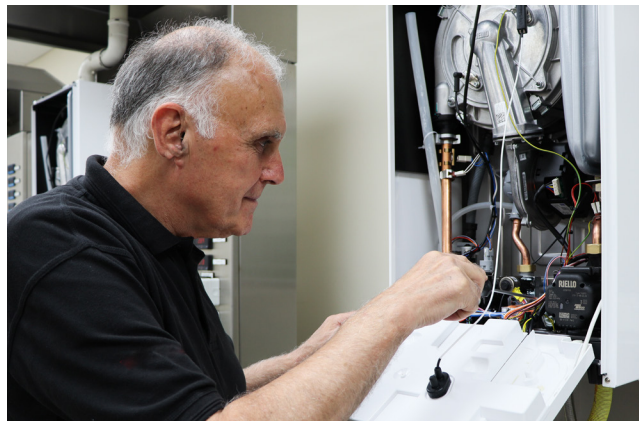
Support

Technical training

Vokèra technical training delivers real value to Gas Safe Registered engineers. Our training focuses on an engineer's need to become familiar with the product and to enable quick and simple installation or repair. Our training is structured to cover: the appliance range, installation, operation, wiring, flueing, benchmark, fault finding and commissioning. To attend you must be Gas Safe Registered.*

For more information or to book a course call **01727 744002** or email training.vokera@carrier.com

Vokèra product courses	
BOILER INSTALLATION AND COMMISSIONING COURSE*	1 DAY
FAULT FINDING PRODUCT COURSE*	1 DAY
HEAT PUMP OVERVIEW PRODUCT COURSE	1 DAY
INDIVIDUAL OR TAILORED WORKSHOPS*	1 DAY
COMMERCIAL HEATING PRODUCT COURSE*	1 DAY



Join our FREE webinars

Our webinar programme covers topics similar to our face-to-face training. Held at 7pm, these are live and fully interactive, with multiple cameras so you can get up close to the products. There are regular Q&A breaks throughout the sessions where, using the Q&A function, you can type your questions in, and our technical trainer will answer them live. No webcam or microphone required.

For further details visit: www.vokera.co.uk/webinars

PROTECTING THE PLANET

RECYCLABILITY
INDEX OF THE
PRODUCT
EQUAL TO

78%**

**The product recyclability index was derived from internal estimates based on a study conducted in 2022 on Riello condensing boiler, Model 20139525 Residence 25 Kis.

REDUCED
EMISSIONS

HIGH PERFORMANCE,
INCREASED BOILER
MODULATION,
REDUCED GAS
CONSUMPTION

PACKAGED
IN FSC-CERTIFIED,
PLASTIC-FREE AND
FULLY RECYCLABLE
CARDBOARD



SYNERGY: DESIGNED TO MINIMISE THE IMPACT ON THE ENVIRONMENT DURING THE ENTIRE PRODUCT LIFE CYCLE

Hi Comfort COMFORT AT YOUR FINGERTIPS

The Synergy is comparable with the Hi, Comfort internet connected platform, available as accessories, that allow you to manage your home comfort in a simple and intuitive way via the app.

Hi, Comfort T100

The platform includes the Hi, Comfort T100, which can function as a traditional thermostat or be used in smart mode through the Hi, Comfort app, when paired with the Hi, Comfort G100-W Wi-Fi Box. The app is available for free on Android and iOS systems and enables users to remotely monitor the status, control the temperature of hot water and adjust boiler settings securely and

easily. Installing the Hi, Comfort T100 is a quick and uncomplicated process, and it does not require any modifications to the electrical system if replacing an old thermostat. The T100 is powered by batteries and can be installed wirelessly if the installation is equipped with a radio frequency receiver.

Hi, Comfort T300

The Synergy is compatible with Hi, Comfort T300, the new room control featuring an elegant and modern design, which integrates advanced functions, including the management, even remotely, of a hybrid system. The new advanced room control, with integrated gateway, can manage up to 3 zones through expansion cards and, in the case of a hybrid installation, operates as a true System Manager, for optimised consumption. Which can also be done through the Hi, Comfort app.



Hi, Comfort T300

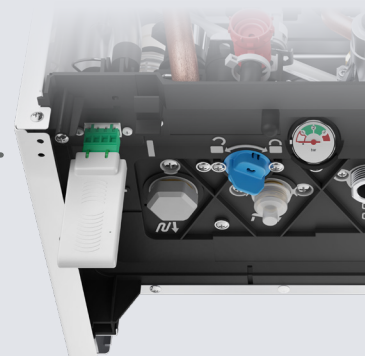
Hi, Comfort K100

The optional Hi, Comfort K100 Smart Key connects the boiler over Wi-Fi allowing remote programming and monitoring of energy consumption. The K100 simply plugs

in to the Modbus port on the Synergy. Follow the step-by-step guide on the Hi, Comfort app to configure.



Easy and fast connection, by inserting the K100 Smart Key in the connector



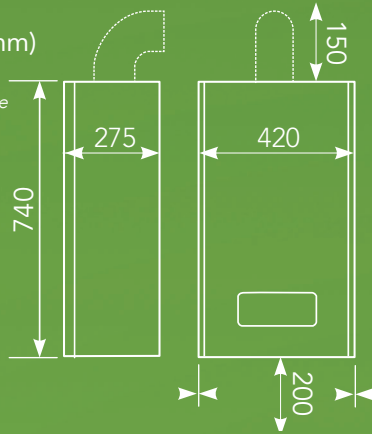
For more details on Hi, Comfort solutions, please visit the website www.hi-comfort.com

SYNERGY

High efficiency combi and system boilers

Dimensions and Clearances (mm)

*From casing or 25mm above flue elbow (whichever is applicable)



Three piece casing

- 7 year parts and labour warranty.⁽¹⁾
- Installer friendly design.
- Six models, three combi and three system variants.
- 1:10 modulation ratio, ensuring lower gas consumption and emissions.
- Fully compliant with the Energy-related Products directive.
- NEW sleek digital touchpad interface.
- Lightweight and compact design.
- Universal pipe layout for easy boiler replacements.
- Stainless-steel heat exchanger.
- Outdoor installation compatible.
- NEW digital modulating circulator.
- Seamlessly integrates into multi-energy systems through the Hi,Comfort platform.
- Wide modulation ratio. Easy to range rate the heating output (below 3kW on 26C model).
- Simplified commissioning process.
- External plug-and-play interface.
- Easy LPG configuration out-of-the-box.

⁽¹⁾Subject to registration and annual service.

SPECIFICATIONS	SYNERGY 25C	SYNERGY 30C	SYNERGY 35C	SYNERGY 20S	SYNERGY 25S	SYNERGY 32S
PRODUCT ORDER CODE	20207896	20207897	20207898	20207900	20207901	20207902
CENTRAL HEATING						
HEAT INPUT (kW)	20.0	25.0	30.0	20.0	25.0	30.0
MAXIMUM HEAT OUTPUT 80/60°C (kW)	19.5	24.4	29.3	19.5	24.4	29.3
MINIMUM HEAT OUTPUT 80/60°C (kW)	2.3	2.9	3.4	2.3	2.9	3.4
MAXIMUM HEAT OUTPUT 50/30°C (kW)	21.3	26.5	31.8	21.3	26.5	31.8
MINIMUM HEAT OUTPUT 50/30°C (kW)	2.6	3.2	3.7	2.6	3.2	3.7
MAX PRESSURE / TEMP (BAR / °C)	3 / 90					
MAX PUMP HEAD-FLOW RATE 1000 L/H(MBAR)	400					
EXPANSION VESSEL CAPACITY (L)	9					
DOMESTIC HOT WATER						
HEAT INPUT (kW)	25.0	30.0	34.9	-	-	-
MIN HEAT INPUT (kW)	2.5	3.0	3.5	-	-	-
FLOW RATE - 35°C RISE (L/MIN)	10.2	12.3	14.3	-	-	-
MINIMUM FLOW RATE (L/MIN)	2.0	2.0	2.0	-	-	-
MAXIMUM PRESSURE (BAR)	8	8	8	-	-	-
MINIMUM PRESSURE (BAR)	0.5	0.5	0.5	-	-	-
DIMENSIONS						
HEIGHT X WIDTH X DEPTH (MM)	740 X 420 X 275					
WEIGHT						
DRY WEIGHT (KG)	29	30	30	28	28	29
CONNECTIONS						
FLOW & RETURN	22MM					
GAS	15MM					
DHW INLET & OUTLET	15MM		-	-	-	-
SAFETY VALVE / CONDENSATE	21MM					
ELECTRICAL						
VOLTAGE (V/Hz)	230/50					
DEGREE OF PROTECTION	IPX5D					
AUXILIARY ELECTRICITY CONSUMPTION - FULL LOAD (W)	30.0	31.1	44.3	30.0	31.1	44.3
AUXILIARY ELECTRICITY CONSUMPTION - PART LOAD (W)	12.2	13.3	13.6	12.2	13.3	13.6
AUXILIARY ELECTRICITY CONSUMPTION - STANDBY (W)	3.7	3.7	3.7	3.7	3.7	3.7
FLUE DETAILS (CONCENTRIC)						
MAXIMUM HORIZONTAL FLUE LENGTH 60/100MM	10M	8M	8M	10M	8M	8M
MAXIMUM VERTICAL FLUE LENGTH 60/100MM	11M	9M	9M	11M	9M	9M
MAXIMUM HORIZONTAL FLUE LENGTH 80/125MM	25M	20M	20M	25M	20M	20M
MAXIMUM VERTICAL FLUE LENGTH 80/125MM	TBA	TBA	TBA	TBA	TBA	TBA
FLUE DETAILS (TWIN)						
MAX HORIZONTAL/VERTICAL FLUE LENGTH (80MM/80MM)	69M/69M	36M/36M	36M/36M	69M/69M	36M/36M	36M/36M
EFFICIENCY						
ErP SEASONAL SPACE HEATING ENERGY EFFICIENCY (CLASS/%)	A/94	A/94	A/94	A/94	A/94	A/94
ErP WATER HEATING EFFICIENCY (XL PROFILE) (CLASS/%)	A/85	A/85	A/87	-	-	-
SAP 2009/2012 EFFICIENCY (%)	89.4	89.4	89.9	90.3	90.2	90.2
NO _x CLASS	6	6	6	6	6	6
OTHER						
SOUND POWER LEVELS - INDOORS (dB)	48	45	47	48	45	47



GET IN TOUCH

Vokera Limited, Unit 7 Riverside Industrial Estate, London Colney, AL2 1HG

E: sales@vokera.co.uk

Sales: 0330 236 8630

Technical: 0330 236 8630

W: www.vokera.co.uk

Service: 0330 236 8630

WE ARE SOCIAL

