

RM_SDT
SLIM DUCT



Whether installed in a ceiling void or in a false ceiling, Toshiba's slim duct offers the ultimate technology, with exceptional energy savings, high performance and easy installation.

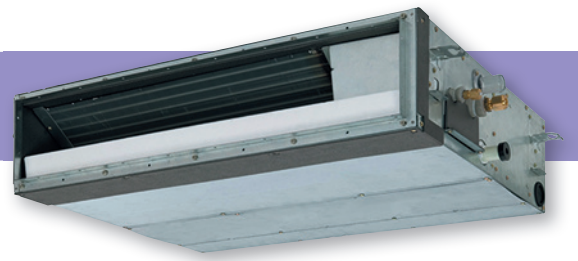
Adaptability

- Up to 50Pa available pressure with four steps set up.
- Easy to combine with different types of air diffusers.
- Flexible design, allows the inlet air configuration to be configured between the standard rear inlet design or as an alternative, from the underside of the unit.

There is also a provision for a fresh air intake supply via a pre-punched knockout hole.

Easy to install

- Slimline design, with a height of just 21cm and a weight of 22kg, gives increased flexibility when designing and installing the system.
- Natural drain discharge or built-in drain pump to manage condensates.



SCOP MAX



4.6
A++

CAPACITY



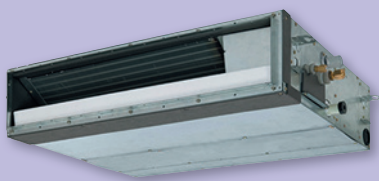
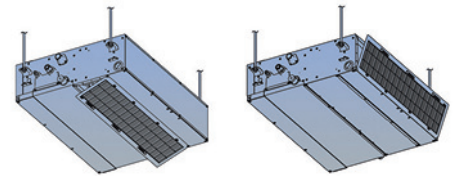
2.5kW > 6kW

OPERATION



-27°C > +52°C

Cleaned prefilter included compatible with rear or underside air suction.



INDOOR UNITS

RAV-RM301SDT-E
RAV-RM401SDT-E
RAV-RM561SDT-E

SDI



OUTDOOR UNITS

RAV-GP561ATW-E/TR

DI



RAV-GM301ATP-E
RAV-GM401ATP-E
RAV-GM561ATP-E



REMOTE CONTROLS

RBC-AXU31-E



RBC-AMSU51E-ES(EN)
RBC-AMTU31-E
RBC-ASCU11-E

SLIM DUCT

SLIM DUCT Performance data with Super Digital Inverter Series 1

Outdoor unit		RAV-GP561ATW-E	
Indoor unit (Slim duct)		RAV-RM561SDT-E	
Cooling capacity	kW	5.0	
Cooling range (min. - max.)	kW	1.2 - 5.6	
Power input (min. - rated - max.)	kW C	0.19 - 1.56 - 1.98	
EER		3.21	
SEER		5.77	
Energy efficiency class	C	A+	
Seasonal electricity consumption	kWh/a C	303	
Heating capacity	kW	5.6	
Heating range (min. - max.)	kW	0.9 - 7.0	
Power input (min. - rated - max.)	kW H	0.16 - 1.58 - 2.66	
COP	W/W	3.54	
SCOP		4.20	
Energy efficiency class	H	A+	
Seasonal electricity consumption	kWh/a H	1266	

SLIM DUCT Performance data with Digital Inverter Series 1

Outdoor unit		RAV-GM301ATP-E		RAV-GM401ATP-E		RAV-GM561ATP-E	
Indoor unit (Slim duct)		RAV- RM301SDT-E		RAV- RM401SDT-E		RAV-RM561SDT-E	
Cooling capacity	kW	2.5		3.6		5.0	
Cooling range (min. - max.)	kW	0.9 - 3.0		0.9 - 4.0		1.5 - 5.6	
Power input (min. - rated - max.)	kW C	0.25 - 0.56 - 0.82		0.18 - 0.93 - 2.00		0.32 - 1.91 - 2.75	
EER		4.46		3.87		2.62	
SEER		6.29		5.86		5.14	
Energy efficiency class	C	A++		A+		A	
Seasonal electricity consumption	kWh/a C	129		215		340	
Heating capacity	kW	3.4		4.0		5.3	
Heating range (min. - max.)	kW	0.8 - 4.5		0.8 - 5.0		1.5 - 6.3	
Power input (min. - rated - max.)	kW H	0.17 - 0.86 - 1.40		0.14 - 0.97 - 1.70		0.32 - 1.50 - 2.40	
COP	W/W	3.95		4.12		3.53	
SCOP		4.60		4.01		4.16	
Energy efficiency class	H	A++		A+		A+	
Seasonal electricity consumption	kWh/a H	907		1337		1517	

SLIM DUCT Physical data indoor

Indoor unit		RAV- RM301SDT-E		RAV- RM401SDT-E		RAV-RM561SDT-E	
Air flow (H/L)	m ³ /h - l/s	660/480 - 183/133		690/522 - 192/145		780/582 - 217/162	
Sound pressure level (H-M-L)*	dB(A)	39-36-33		39-36-33		45-40-36	
Sound power level (H-M-L)*	dB(A)	52-48-44		52-48-44		55-53-48	
Dimensions (HxWxD)	mm	210 x 845 x 645		210 x 845 x 645		210 x 845 x 645	
Weight	kg	22		22		22	
External static pressure (stand/upper limit)	Pa	30(45-5)		30(45-5)		30(45-5)	

C: cooling mode
H: heating mode
*bottom air inlet