

MMYMAP_HT8P
SMMS-e



CAPACITY OPERATION



8HP > 60HP



-25°C > +46°C

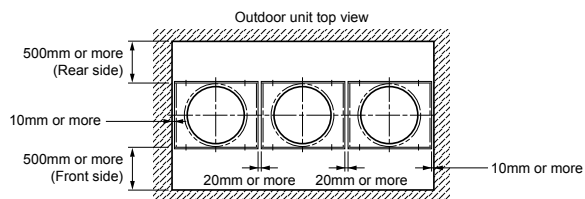
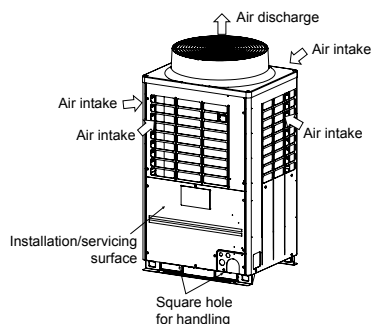
Toshiba all inverter VRF system has continued to evolve and includes many intelligent and innovative features that maximise end user comfort and system efficiencies.

Features

Outdoor unit	CO	MMY-	MAP0806T8P-E	MAP1006T8P-E	MAP1206T8P-E	MAP1406T8P-E	MAP1606T8P-E	MAP1806T8P-E	MAP2006T8P-E	MAP2206T8P-E	
Outdoor unit	HP	MMY-	MAP0806HT8P-E	MAP1006HT8P-E	MAP1206HT8P-E	MAP1406HT8P-E	MAP1606HT8P-E	MAP1806HT8P-E	MAP2006HT8P-E	MAP2206HT8P-E	
Capacity range	HP		8	10	12	14	16	18	20	22	
Cooling capacity	kW		22,4	28,0	33,5	40,0	45,0	50,4	56,0	61,5	
Heating capacity +7°C	kW		25,0	31,5	37,5	45,0	50,0	56,0	63,0	64,0	
Heating capacity -7°C	kW		19,8	24,2	27,9	34,6	37,2	43,1	46,9	47,6	
Power supply	V-ph-Hz		380/415-3-50	380/415-3-50	380/415-3-50	380/415-3-50	380/415-3-50	380/415-3-50	380/415-3-50	380/415-3-50	
Efficiency	EER rated	W/W	4.04	3.64	2.99	3.25	3.15	3.45	3.24	2.65	
	EER 50% load	W/W	6,4	6,22	5,84	5,7	5,64	5,5	5,37	5,34	
	SEER	η/std	241,4%/6.11	239,4%/6.06	235%/5.95	222.2%/5.63	208.6%/5.29	235.4%/5.96	224.6%/5.69	198.6%/5.04	
Efficiency	COP rated	W/W	4,52	4,25	3,89	4,02	3,88	3,97	3,71	3,74	
	COP 50% load	W/W	6,44	6,01	5,43	5,77	5,55	5,41	5,05	5,07	
	COP -7°C 100% load	W/W	3,66	3,40	3,06	3,23	3,05	3,19	2,91	2,94	
	SCOP	η/std	142.6%/3.64	138.2%/3.53	143.4%/3.66	139.8%/3.57	145%/3.7	140.6%/3.59	140.6%/3.59	136.6%/3.49	
Electrical characteristics	Running current	A	C	8,8	12,1	15,5	19,5	22,4	22,9	26,8	35,6
	Power input	kW	C	5,54	7,69	11,20	12,30	14,30	14,60	17,30	23,20
	Running current	A	H	8,8	11,6	15,0	17,8	20,2	22,1	26,1	26,5
	Power input	kW	H	5,53	7,41	9,65	11,20	12,90	14,10	17,00	17,10
Dimensions (h x w x d)	mm		1830 x 990 x 780	1830 x 990 x 780	1830 x 990 x 780	1830 x 1210 x 780	1830 x 1210 x 780	1830 x 1600 x 780	1830 x 1600 x 780	1830 x 1600 x 780	
Weight	kg	CO/HP	241/242		299/300		370/371				
Compressor	Type		Hermetic Twin Rotary								
	Motor output	kW	2.1x2	3.1x2	3.9x2	4.8x2	5.8x2	6.5x2	7.6x2	9x2	
Fan unit	Type		Propeller fan								
	Motor output	W	1	1	1	1	1	2	2	2	
	Air volume	m³/h	9700		12200		12600		17300		17900
External static pressure available	Pa		60	60	50	50	40	50	40	40	
R410A refrigerant charge	kg	HP/CO	11.5/10.5	11.5/10.5	11.5/10.5	11.5/11.5	11.5/11.5	11.5/11.5	11.5/11.5	11.5/11.5	
	CO ₂ Teq	HP/CO	24/21.9	24/21.9	24/21.9	24/24	24/24	24/24	24/24	24/24	
Power supply wiring	MCA	A	20,5	21,5	36,1	31	35,8	40,6	44,9	49,3	
	MCOP	A	25		32		40		63		
Pipe connection	Gas line type - Diameter		Brazed - 3/4"	Brazed - 7/8"	Brazed - 1-1/8"	Brazed - 1-1/8"	Brazed - 1-1/8"	Brazed - 1-1/8"	Brazed - 1-1/8"	Brazed - 1-1/8"	
	Liquid line type - Diameter		Flare - 1/2"	Flare - 1/2"	Flare - 1/2"	Flare - 5/8"	Flare - 5/8"	Flare - 5/8"	Flare - 5/8"	Flare - 3/4"	
	Balance diameter		Flare - 3/8"	Flare - 3/8"	Flare - 3/8"	Flare - 3/8"	Flare - 3/8"	Flare - 3/8"	Flare - 3/8"	Flare - 3/8"	
Max. number of connected indoor units			18	22	27	31	36	40	45	49	
Sound pressure level	Cooling	dB(A)	C	55	57	59	60	62	60	61	61
	Heating	dB(A)	H	56	58	61	62	64	61	62	62
Sound power level	Cooling	dB(A)	C	74	74	80	80	81	81	82	83
	Heating	dB(A)	H	74	74	82	82	83	83	84	84
Operation temperature range	Cooling	CDB	C	-10/46							
	Heating	CWB	H	-25/15,5							

C = Cooling mode H = Heating mode
Connected indoor units : MMU-UP***1HP-E

Installation space



Leave space necessary for running, installation and servicing.

- If there is an obstacle above the outdoor unit, leave a space of 2000 mm or more to the top end of the outdoor unit.
- If there is a wall around the outdoor unit, make sure that its height does not exceed 800 mm.

Also applicable for SMMS-e stand alone and SHRME

Capacity table - Standard model

HP	Capacity		Combination	Modèle	EER/SEER	COP/SCOP	Max indoor connectivity	
	Cooling/Heating in kW							
8	22.4/25		8	MMY-MAP0806HT8P-E	4.04/6.11	4.52/3.64	18	
10	28/31.5		10	MMY-MAP1006HT8P-E	3.64/6.06	4.25/3.53	22	
12	33.5/37.5		12	MMY-MAP1206HT8P-E	3.35/5.95	3.89/3.66	27	
14	38.4/45		14	MMY-MAP1406HT8P-E	3.25/5.63	4.02/3.57	31	
16	45/50		16	MMY-MAP1606HT8P-E	3.15/5.29	3.88/3.7	36	
18	50.4/56		18	MMY-MAP1806HT8P-E	3.45/5.96	3.97/3.59	40	
20	56/62		20	MMY-MAP2006HT8P-E	3.24/5.69	3.71/3.59	45	
22	61.5/63		22	MMY-MAP2206HT8P-E	2.65/5.04	3.74/3.57	49	
24	67/75		12 + 12	MMY-AP2416HT8P-E	3.35/5.95	3.88/3.66	52	
26	73.5/82.5		14 + 12	MMY-AP2616HT8P-E	3.3/5.79	3.97/3.61	58	
28	78.5/87.5		16 + 12	MMY-AP2816HT8P-E	3.23/5.59	3.89/3.69	63	
30	85/95		16 + 14	MMY-AP3016HT8P-E	3.19/5.45	3.94/3.64	64	
32	90/100		16 + 16	MMY-AP3216HT8P-E	3.15/5.29	3.88/3.7	64	
34	95.4/106		18 + 16	MMY-AP3416HT8P-E	3.3/5.64	3.93/3.64	64	
36	101/113		20 + 16	MMY-AP3616HT8P-E	3.2/5.51	3.78/3.64	64	
38	106.5/114		22 + 16	MMY-AP3816HT8P-E	2.84/5.17	3.8/3.63	64	
40	112/126		20 + 20	MMY-AP4016HT8P-E	3.24/5.69	3.71/3.59	64	
42	117.5/127		22 + 20	MMY-AP4216HT8P-E	2.9/5.37	3.72/3.59	64	
44	123/128		22 + 22	MMY-AP4416HT8P-E	2.65/5.04	3.74/3.57	64	
46	130/145		16 + 16 + 14	MMY-AP4616HT8P-E	3.18/5.39	3.92/3.66	64	
48	135/150		16 + 16 + 16	MMY-AP4816HT8P-E	3.15/5.29	3.88/3.7	64	
50	140.4/156		18 + 16 + 16	MMY-AP5016HT8P-E	3.25/5.53	3.91/3.66	64	
52	146/163		20 + 16 + 16	MMY-AP5216HT8P-E	3.18/5.44	3.81/3.66	64	
54	151.5/164		22 + 16 + 16	MMY-AP5416HT8P-E	2.92/5.2	3.82/3.65	64	
56	157/176		20 + 20 + 16	MMY-AP5616HT8P-E	3.21/5.58	3.75/3.62	64	
58	162.5/177		22 + 20 + 16	MMY-AP5816HT8P-E	2.97/5.35	3.77/3.62	64	
60	168/178		22 + 22 + 16	MMY-AP6016HT8P-E	2.77/5.13	3.78/3.61	64	

Capacity table - High efficiency & high capacity model

HP	Capacity		Combination	Modèle	EER/SEER	COP/SCOP	Max indoor connectivity	
	Cooling/Heating in kW							
20 HP	56/63		10 + 10	MMY-AP2026HT8P-E	3.63/6.06	4.26/3.53	45	
22 HP	61.5/69		12 + 10	MMY-AP2226HT8P-E	3.47/6.02	4.04/3.61	49	
36 HP	100.5/112.5		12 + 12 + 12	MMY-AP3626HT8P-E	3.35/5.95	3.89/3.66	64	
38 HP	107/120		14 + 12 + 12	MMY-AP3826HT8P-E	3.31/5.84	3.93/3.63	64	
40 HP	113.5/127.5		14 + 14 + 12	MMY-AP4026HT8P-E	3.28/5.73	3.98/3.6	64	
42 HP	120/135		14 + 14 + 14	MMY-AP4226HT8P-E	3.25/5.63	4.01/3.57	64	
44 HP	125/140		16 + 14 + 14	MMY-AP4426HT8P-E	3.21/5.51	3.97/3.62	64	
54 HP	152/171		20 + 20 + 14	MMY-AP5426HT8P-E	3.24/5.69	3.78/3.59	64	



Piping rules

		Allowable value	Piping section
Piping length	Total extension of pipe (Liquid pipe, real length)	Below 34HP	300m
		34HP or more	1000m
	Farthest piping length	Equivalent length	235m
		Real length	190m
	Equivalent length of farthest piping form 1st branching		L3 + L4 + L5 + L6 + j
	Equivalent length of farthest piping between outdoor units		LA + Lc (LA + Lb)
	Max. equivalent length of main piping	Equivalent length	120m
		Real length	100m
Max. equivalent length of outdoor unit connecting piping		10m	
Max. real length of indoor unit connecting piping		30m	
Max. equivalent length between branches		50m	
Difference in height	Height between indoor and outdoor units	Upper outdoor unit	70m
		Lower outdoor unit	40m
	Height between indoor units		40m
	Height between outdoor units		5m

(*1) : (D) is outdoor unit farthest from the 1st branch and (J) is the indoor unit farthest from the 1st branch.
 (*2) : If the height difference (H1) between indoor and outdoor unit exceeds 3 m, set 65 m or less.
 (*3) : If the max. combined outdoor unit capacity is 54HP or more, then max. equivalent length is 70 m or less (real length is 50 m or less).
 (*4) : If the height difference (H2) between indoor units exceeds 3 m, set 50 m or less.
 (*5) : If the height difference (H2) between indoor units exceeds 3 m, set 30 m or less
 (*6) : Total charging refrigerant is 140 kg or less.
 (*7) : Extension up till 90 m is possible with conditions below

- Outdoor temperature tooling: 10 - 46 (DB)
 Heating: -5 - 15.5 (WB)
 - Equivalent length of farthest piping from 1st branching Li < 50 m
 - Real length of main piping L1 < 100 m
 - Height difference between indoor units H2 < 3 m
 - Total capacity of combined indoor units: 90% - 105%
 - Single CDU, and up to 20HP
 - Minimum capacity of connectable indoor: unit 4HP or larger

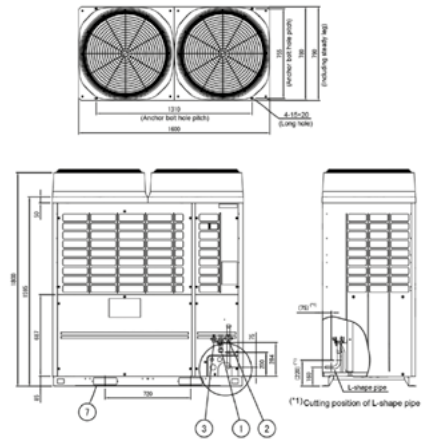
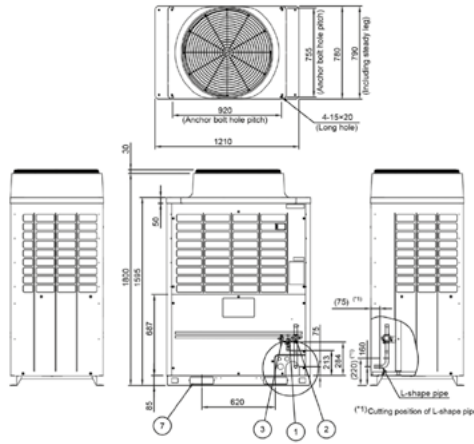
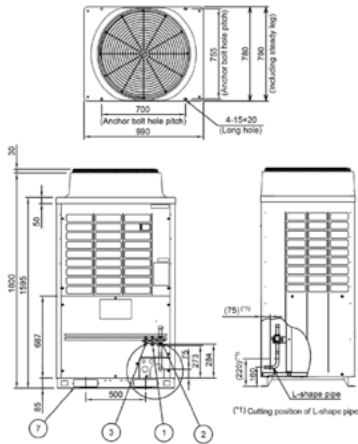
Drawings

Unit: mm

MMY-MAP0806HT8P-E
 MMY-MAP1006HT8P-E
 MMY-MAP1206HT8P-E

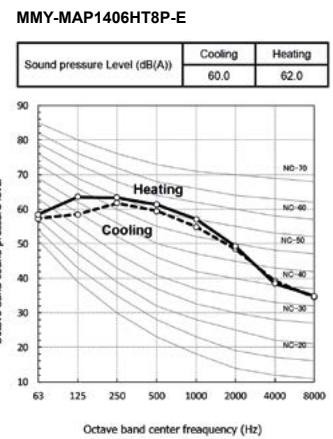
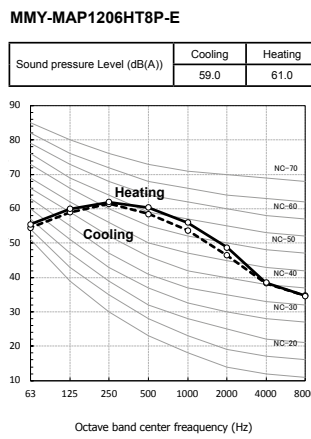
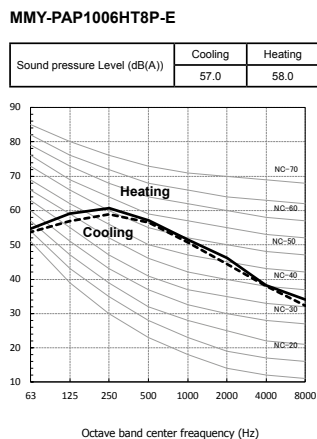
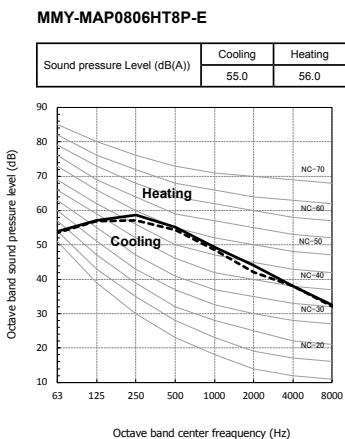
MMY-MAP1406HT8P-E
 MMY-MAP1606HT8P-E

MMY-MAP1806HT8P-E
 MMY-MAP2006HT8P-E
 MMY-MAP2206HT8P-E



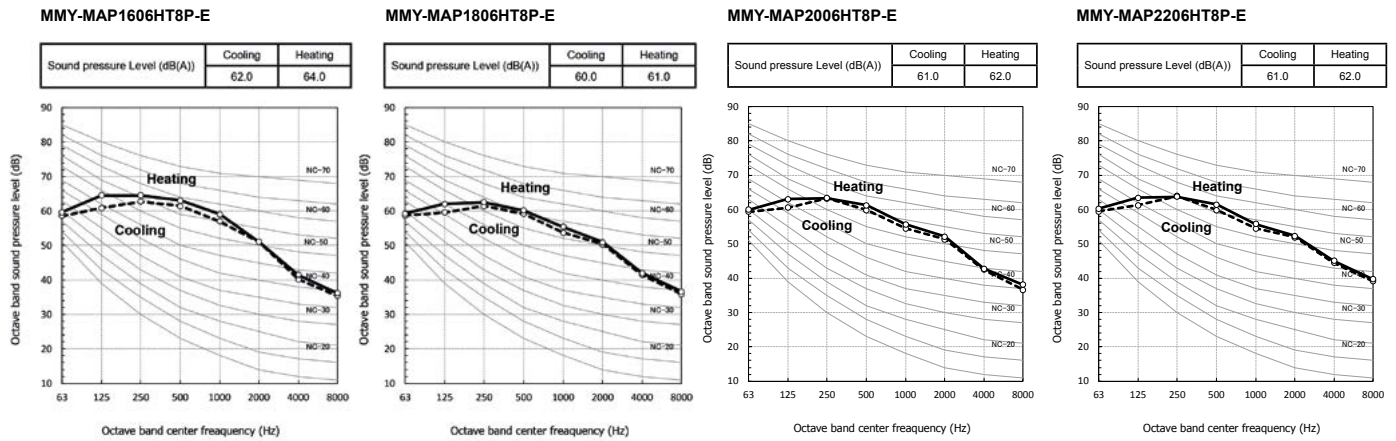
Sound pressure levels

Unit: dB(A)



Sound pressure levels

Unit: dB(A)



Night mode sound pressure levels

Sound reduction and capacity approximation (Reference)

Type	Night operation sound reduction dB (A)	Capacity	
		Cooling	Heating
0806	50	Approx. 85%	Approx. 80%
1006	50	Approx. 70%	Approx. 65%
1206	50	Approx. 60%	Approx. 55%
1406	53	Approx. 80%	Approx. 80%
1606	53	Approx. 70%	Approx. 70%
1806	54	Approx. 65%	Approx. 65%
2006	54	Approx. 60%	Approx. 60%
2206	54	Approx. 55%	Approx. 55%

Accessories

Name	Model name	Capacity	Appearance	Remarks	
Branching joints and headers	Y-shape branching joint	RBM-BY55E	Under 6.4hp		
		RBM-BY105E	From 6.4 to 14.2hp		
		RBM-BY205E	From 14.2 to 25.2hp		
		RBM-BY305E	25.2hp or more		
	4-branching header	RBM-HY1043E	Under 14.2hp		
		RBM-HY2043E	From 14.2 to 25.2hp		
8-branching header	RBM-HY1083E	Under 14.2hp			
	RBM-HY2083E	From 14.2 to 25.2hp			
Branching joint for connection of outdoor units	RBM-BT14E	Under 26hp			
	RBM-BT24E	26hp or more			
Optional PCB of outdoor unit	Power peak-cut control board	TCB-PCDM4E		Limit capacity of the VRF outdoor unit at 85%, 75%, 70% or 60% load or stop it. Dry contact	
	External master ON/OFF control board	TCB-PCMO4E		Dry contact	
	Output control board	TCB-PCIN4E		Operation output: The operation indicator is on while any indoor unit in the system is operating. Error output: The error indicator is on when an error is occurred on even one of the indoor or outdoor units in the system. Dry contact	