

HM\_MUT  
**COMPACT 4-WAY CASSETTE**



The compact 4 way cassette has been especially designed for small commercial application where a compact efficient unit is needed.

**Design**

- Elegant and Flat appearance
- Fit within the T-bar of grid ceiling : 620mm X 620mm.

**Comfort**

- Individual setting of louver position: 3 different swing mode: standard, diagonally, opposite, turn around.
- 5 steps air flow.

**Easy to install**

- Compact and thin chassis with only 256mm height
- Built-in high-lift drain pump
- Light-weight unit, for easy and quick installation.

SCOP MAX



4.70  
A++

CAPACITY



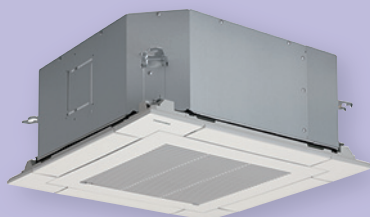
2.5kW > 6kW

OPERATION



-27°C > +52°C

Occupancy sensor switches off automatically the unit if nobody is in the room to save energy.



**INDOOR UNITS**

RAV-HM301MUT-E  
 RAV-HM401MUT-E  
 RAV-HM561MUT-E/TR

**SDI**



**OUTDOOR UNITS**

RAV-GP561ATW-E/TR

**DI**



RAV-GM301ATP-E  
 RAV-GM401ATP-E  
 RAV-GM561ATP-E/TR



**REMOTE CONTROLS**

RBC-AXU31UM-E  
 RBC-AXU31-E



RBC-AMSU51E-ES(EN)  
 RBC-AMTU31-E  
 RBC-ASCU11-E

## COMPACT 4-WAY CASSETTE

### COMPACT 4-WAY CASSETTE Performance data with Super Digital Inverter Series 1

Outdoor unit			RAV-GP561ATW-E/TR
Indoor unit (600X600 Cassette)			RAV-HM561MUT-E/TR
<b>Cooling capacity</b>	<b>kW</b>		<b>5.0</b>
Cooling range (min. - max.)	kW		1.2 - 5.6
Power input (min. - rated - max.)	kW	C	0.19 - 1.56 - 1.97
EER			3.21
SEER			6.27
Energy efficiency class		C	A++
Seasonal electricity consumption	kWh/a	C	279
<b>Heating capacity</b>	<b>kW</b>		<b>5.6</b>
Heating range (min. - max.)	kW		0.9 - 7.0
Power input (min. - rated - max.)	kW	H	0.16 - 1.60 - 2.36
COP	W/W		3.50
SCOP			4.32
Energy efficiency class		H	A+
Seasonal electricity consumption	kWh/a	H	1231

### COMPACT 4-WAY CASSETTE Performance data with Digital Inverter Series 1

Outdoor unit			RAV-GM301ATP-E	RAV-GM401ATP-E	RAV-GM561ATP-E/TR
Indoor unit (600X600 Cassette)			RAV-HM301MUT-E	RAV-HM401MUT-E	RAV-HM561MUT-E/TR
<b>Cooling capacity</b>	<b>kW</b>		<b>2.5</b>	<b>3.6</b>	<b>5.0</b>
Cooling range (min. - max.)	kW		0.9 - 3.0	0.9 - 4.0	1.5 - 5.6
Power input (min. - rated - max.)	kW	C	0.25 - 0.59 - 0.82	0.18 - 0.90 - 2.00	0.30 - 1.64 - 1.86
EER			4.24	4.00	3.05
SEER			5.94	5.76	5.69
Energy efficiency class		C	A+	A+	A+
Seasonal electricity consumption	kWh/a	C	147	219	307
<b>Heating capacity</b>	<b>kW</b>		<b>3.4</b>	<b>4.0</b>	<b>5.3</b>
Heating range (min. - max.)	kW		0.8 - 4.5	0.8 - 5.0	1.5 - 6.3
Power input (min. - rated - max.)	kW	H	0.17 - 0.76 - 1.40	0.14 - 0.95 - 1.70	0.30 - 1.47 - 2.40
COP	W/W		4.47	4.21	3.61
SCOP			4.70	4.44	4.37
Energy efficiency class		H	A++	A+	A+
Seasonal electricity consumption	kWh/a	H	685	851	897

### COMPACT 4-WAY CASSETTE Physical data indoor

Indoor unit			RAV-HM301MUT-E	RAV-HM401MUT-E	RAV-HM561MUT-E/TR
Air flow (H/L)	m <sup>3</sup> /h - l/s		640/440 - 177/122	660/468 - 183/130	798/546 - 221/152
Sound pressure level (H-M-L)	dB(A)		38 - 36 - 30	41 - 36 - 32	44 - 39 - 35
Sound power level (H-M)	dB(A)		53 - 51 - 45	56 - 51 - 47	59 - 54 - 50
Dimensions (HxWxD)	mm		256 x 575 x 575	256 x 575 x 575	256 x 575 x 575
Weight	kg		15	15	15
Panel dimensions (HxWxD)	mm		12 x 620 x 620	12 x 620 x 620	12 x 620 x 620
Panel weight	kg		2.5	2.5	2.5

C: cooling mode  
H: heating mode  
H-M-L: High - Medium - Low speed