

MMU-UP_HP 4-WAY CASSETTE



The 4-Way Cassette is designed to provide uniform air distribution and total user comfort making this unit the ideal solution for small commercial applications.

CAPACITY **SOUND PRESSURE LEVEL**

↑

1 HP < 6 HP **27dB(A)**

OUTDOOR UNITS COMPATIBILITY

Side Blow & Mini SMMS-e SMMS-u SMMS-e SHRM-e

LOCAL CONTROLS

RBC-AXU31-E RBC-ASCU11-E RBC-AMTU31-E

RBC-AMSU51-EN/ES

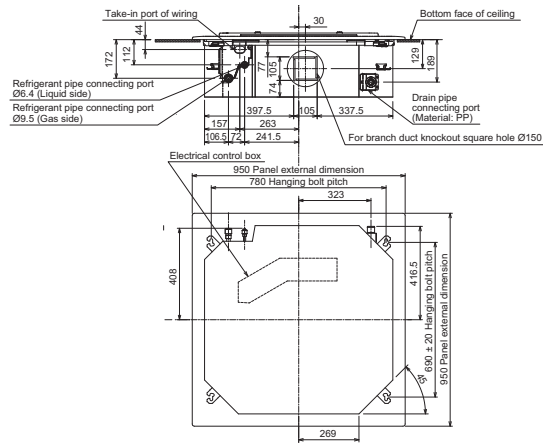
Features

Model name	MMU-	UP0091HP-E	UP0121HP-E	UP0151HP-E	UP0181HP-E	UP0241HP-E	UP0271HP-E	UP0301HP-E	UP0361HP-E	UP0481HP-E	UP0561HP-E	
Capacity code	HP	1	1.3	1.7	2	2.5	3	3.2	4	5	6	
Cooling	kW	2.8	3.6	4.5	5.6	7.1	8.0	9.0	11.2	14.0	16.0	
Heating	kW	3.2	4.0	5.0	6.3	8.0	9.0	10.0	12.5	16.0	18.0	
Electrical characteristics	Power supply	1 phase 50Hz 230V(220V-240V) - Separate power supply for indoor units is required										
	Running current	50HZ	0.23	0.26	0.27	0.29	0.38	0.38	0.43	0.73	0.88	0.88
	Power consumption	H/M/L W	21 / 18.5 / 17.5	21 / 18.5 / 17.5	23 / 20 / 18.7	26 / 23 / 19	36 / 23 / 19	36 / 23 / 19	43 / 30 / 21	88 / 45 / 24	112 / 45 / 27	112 / 51 / 32
	Starting current	A	0.30	0.30	0.33	0.36	0.42	0.42	0.59	0.87	1.23	1.26
Appearance	Main unit	Heat-insulating material attached - Zinc hot dipping steel plate										
	Ceiling panel	Model	RBC-U32PGP-E									
		Panel color	White (Munsell: 2.5GY9.0/0.5)									
Outer dimensions	Main unit	HxLxP mm	256x840x840	256x840x840	256x840x840	256x840x840	256x840x840	256x840x840	256x840x840	319x840x840	319x840x840	319x840x840
	Ceiling panel	HxLxP mm	30x950x950	30x950x950	30x950x950	30x950x950	30x950x950	30x950x950	30x950x950	30x950x950	30x950x950	30x950x950
Total weight	Main unit	kg	18	18	20	20	20	20	25	25	25	
	Ceiling panel	kg	4	4	4	4	4	4	4	4	4	
Heat exchanger	Finned tube											
Soundproof / Heat insulating material	Non-flammable insulation											
Fan unit	Fan	Turbo fan										
	Standard air flow	H/M/L m ³ /h	800/730/680	800/730/680	930/830/790	1050/920/800	1290/920/800	1290/920/800	1320/1100/850	1970/1430/1070	2130/1430/1130	2130/1520/1230
	Motor output	W	14		20		68		72			
Sound pressure level	H/M/L dB(A)	30/29/27	30/29/27	31/29/27	32/29/27	35/31/28	35/31/28	38/33/30	43/38/32	46/38/33	46/40/33	
Sound power level	H dB(A)	45	45	46	47	50	50	53	58	61	61	
Air filter	Long life filter											
Controller	Wired or infrared remote controller											
Connecting pipe	Gas pipe	inch	3/8"	3/8"	1/2"	1/2"	5/8"	5/8"	5/8"	5/8"	5/8"	
	Liquid pipe	inch	1/4"	1/4"	1/4"	1/4"	3/8"	3/8"	3/8"	3/8"	3/8"	
	Drain port (Outside dia.)	mm	25 (Polyvinyl chloride tube)									

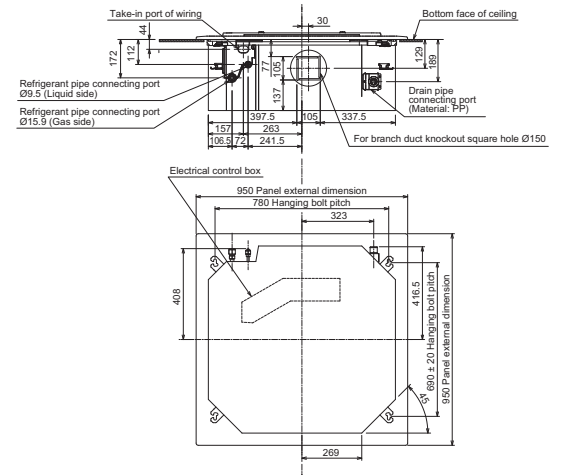
Drawings

Unit: mm

MMU-UP0091HP-E to MMU-UP0301HP-E



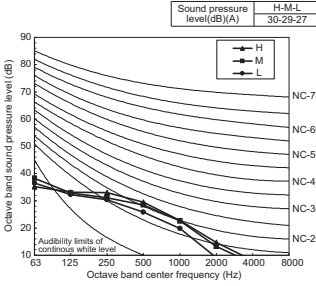
MMU-UP0361HP-E to MMU-UP0561HP-E



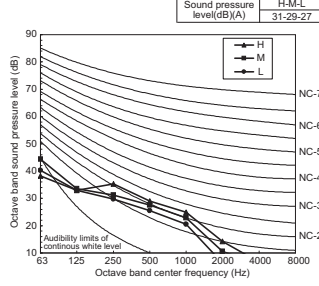
Sound pressure levels

Unit: dB(A)

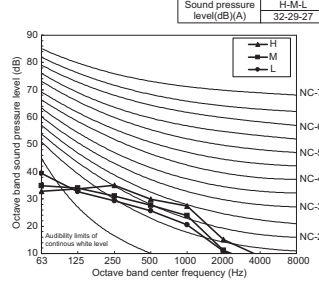
MMU-UP0091HP-E, UP0121HP-E



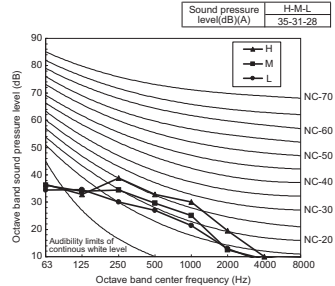
MMU-UP0151HP-E



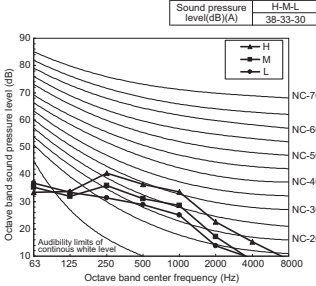
MMU-UP0181HP-E



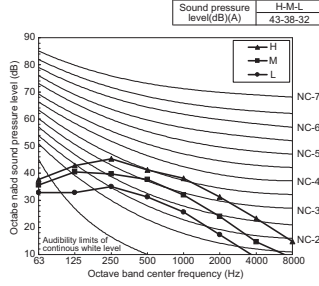
MMU-UP0241HP-E, UP0271HP-E



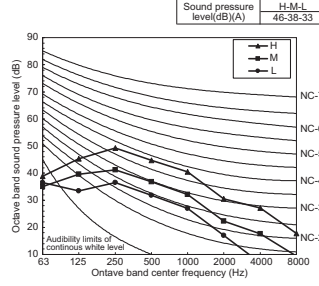
MMU-UP0301HP-E



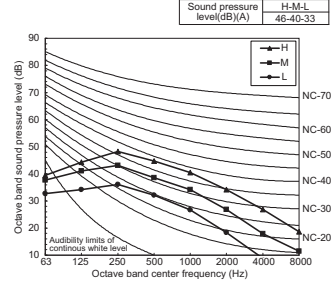
MMU-UP0361HP-E



MMU-UP0481HP-E Sound



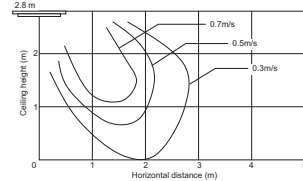
MMU-UP0561HP-E Sound



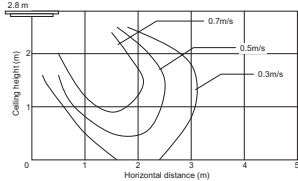
Air diffusion

Unit: m/s

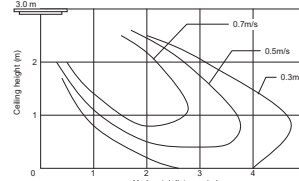
MMU-UP0091HP-E, UP0121HP-E



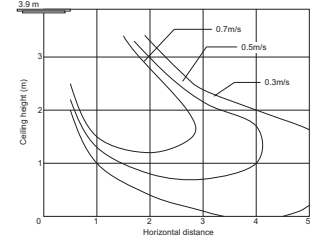
MMU-UP0151HP-E, UP0181HP-E



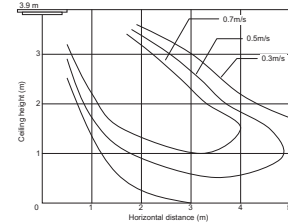
MMU-UP0241HP-E, UP0271HP-E, UP0301HP-E



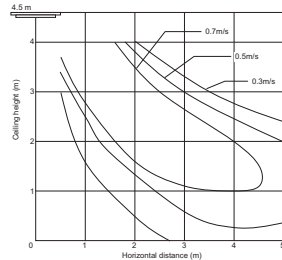
MMU-UP0361HP-E



MMU-UP0481HP-E, UP0561HP-E

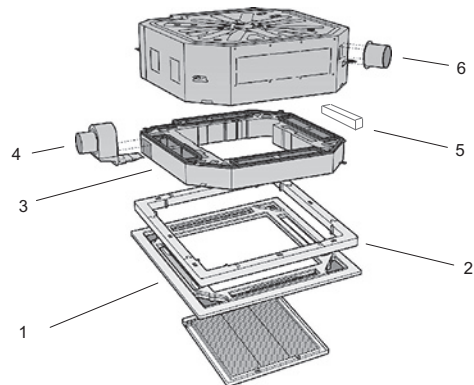


MMU-UP0361HP-E, UP0481HP-E, UP0561HP-E (High ceiling 3)



Accessories

No	Type	Model name	Qty/unit	Note
1	Ceiling Panel (Wide-flow louver)	RBC-U32PGP-E	1	White (Munsell: 2.5GY9.0/0.5)
2	Spacer for height adjustment	TCB-SP1602UE	1	50 mm
3	Fresh air chamber	TCB-GFC1602UE	1	Use with TCB-GB1602U
4	Fresh air intake box	TCB-GB1602UE	1	Connection=Dia.100 mm fresh air intake ratio: Up to 20%
5	Air discharge direction kit	TCB-BC1602UE	1	6-direction patterns
6	Auxiliary fresh air flange	TCB-FF101URE2	1	Connection=Dia.100 mm fresh air intake ratio: Up to 5%



4-way cassette connectors

CN32	CN60	CN61	CN70	CN73	CN80
Additional ventilation control from remote control	Operation status signal output (cooling, heating, fan, defrost, thermo-on)	External On/Off, operation output and alarm output	Warning symbol on remote control based on signal input. No IDU thermo off.	Forced IDU thermo-off based on signal input	Forced IDU thermo-off and IDU lock based on signal input
•	•	•	•	•	•