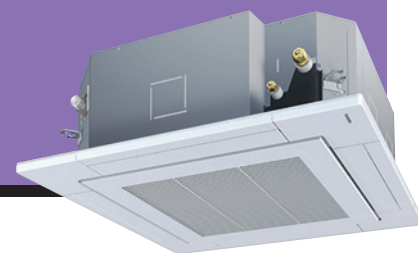


# GM\_UT 4-WAY SMART CASSETTE



**Dedicated for commercial application, the Toshiba smart cassette is the perfect mix between comfort, elegance and efficiency.**

### Efficiency

- Top class SEER and SCOP, thanks to long slit heat exchanger with magic coil treatment, high efficiency fan motor and large opening air conditioning ventilation.
- Energy saving with the occupancy sensor which will automatically switch off the unit if nobody is in the room.

### Comfort

- Unique flap design for optimal air distribution
- Individual setting of louver position: 3 different swing modes: standard, diagonally, opposite or turn around
- 5 fan steps to precisely control the air flow.

### Design

- Simple & elegant design fits various rooms.

SCOP MAX



5.51

CAPACITY



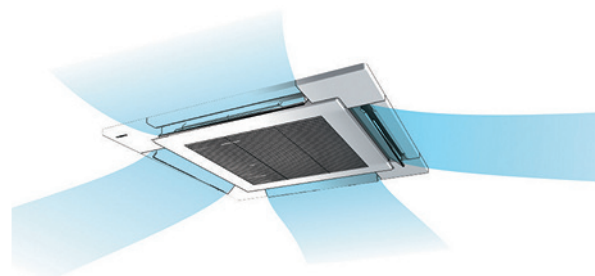
5kW > 14kW

OPERATION



-27°C > +52°C

Louver position automatically adjusts to prevent cold draught being felt by users



**INDOOR UNITS**

RAV-GM561UT-E/TR  
RAV-GM801UT-E/TR  
RAV-GM1101UT-E/TR  
RAV-GM1401UT-E/TR

**SDI**



**OUTDOOR UNITS**

RAV-GP561ATP-E/TR



RAV-GP801AT-E/TR



RAV-GP1101AT-E/TR  
RAV-GP1401AT-E/TR



**REMOTE CONTROLS**

RBC-AX41U(W)-E  
TCB-AX32E2



RBC-AMS55E-ES(EN)  
RBC-AMS41E  
RBC-AMT32E  
RBC-AS41E

**4-WAY SMART CASSETTE** Performance data with Super Digital Inverter Series 1

*PRELIMINARY DATA*

Outdoor unit		RAV-GP561ATP-E/TR	RAV-GP801AT-E/TR	RAV-GP1101AT-E/TR	RAV-GP1401AT-E/TR
Indoor unit (Cassette)		RAV-GM561UT-E/TR	RAV-GM801UT-E/TR	RAV-GM1101UT-E/TR	RAV-GM1401UT-E/TR
<b>Cooling capacity</b>	<b>kW</b>	<b>5.0</b>	<b>7.1</b>	<b>10.0</b>	<b>12.5</b>
Cooling range (min. - max.)	kW	1.2 - 5.6	1.9 - 8.0	3.1 - 12.0	3.1 - 14.0
Power input (min. - rated - max.)	kW C	TBD - 1.2 - TBD	0.26 - 1.37 - 2.94	0.56 - 1.90 - 2.80	0.56 - 2.91 - 3.40
EER		4.17	5.18	5.26	4.30
SEER		8.07	9.40	8.80	8.30
Energy efficiency class	C	A++	A+++	A+++	-
Seasonal electricity consumption	kWh/a C	TBD	264	398	903
<b>Heating capacity</b>	<b>kW</b>	<b>5.6</b>	<b>8.0</b>	<b>11.2</b>	<b>14.0</b>
Heating range (min. - max.)	kW	0.9 - 8.1	1.3 - 11.3	2.6 - 13.0	2.6 - 16.5
Power input (min. - rated - max.)	kW H	TBD - 1.3 - TBD	0.20 - 1.45 - 3.15	0.41 - 2.18 - 2.98	0.41 - 3.04 - 4.18
COP	W/W	4.31	5.52	5.14	4.61
SCOP		5.01	5.51	5.00	4.97
Energy efficiency class	H	A++	A+++	A++	-
Seasonal electricity consumption	kWh/a H	TBD	1294	2573	2702

TBD: To Be Determined

**4-WAY SMART CASSETTE** Physical data indoor

*PRELIMINARY DATA*

Indoor unit		RAV-GM561UT-E/TR	RAV-GM801UT-E/TR	RAV-GM1101UT-E/TR	RAV-GM1401UT-E/TR
Air flow (H/L)	m <sup>3</sup> /h - l/s	1050/750 - 291/208	1920/810 - 533/225	2250/1050 - 625/291	2250/1170 - 625/325
Sound pressure level (H-M-L)	dB(A)	32-29-26	42-35-27	48-40-31	48-41-33
Sound power level (H-M-L)	dB(A)	48-45-43	56-49-43	61-54-46	61-55-48
Dimensions (HxWxD)	mm	256 x 840 x 840	319 x 840 x 840	319 x 840 x 840	319 x 840 x 840
Weight	kg	20	25	25	25
Panel dimensions (HxWxD)	mm	30x950x950	30x950x950	30x950x950	30x950x950
Panel weight	kg	5	5	5	5

C: cooling mode  
H: heating mode