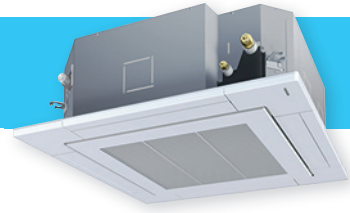


# MMU-UP\_H 4-WAY SMART CASSETTE



**> NEW**



The 4-way cassette is designed to provide uniform air distribution and total user comfort making this unit the ideal solution for small commercial applications. Combining all the expertise of Toshiba, the Smart Cassette is the perfect mix between comfort, elegance and efficiency.

**Comfort**

- Unique flap design for optimal air distribution.
- Louvre position individual setting: 3 different swing modes from standard, diagonally, opposite to turn around.
- 5-step fan to precisely control the air flow.
- Low noise level thanks to large air suction opening.

**Reliability**

- Built-in high-lift drain pump.

**Savings**

- Optional motion sensor for automatic operation.
- High efficiency DC fan motor to maximize heat exchange with limited power consumption.

CAPACITY



2.8kW > 18kW

SOUND PRESSURE LEVEL



26dB(A)

**OUTDOOR UNITS**



Side Blow & Mini SMMS-e



SMMS-u & SHRM Advance



SMMS-e & SHRM-e

**LOCAL CONTROLS**



RBC-AXU41U-E



RBC-AMSU51E-ES/EN  
RBC-AMTU31-E  
RBC-ASCU11-E

**4-WAY SMART CASSETTE Performances**

Indoor unit	MMU- UP0091H-E/TR	UP0121H-E/TR	UP0151H-E/TR	UP0181H-E/TR	UP0241H-E/TR	UP0271H-E/TR	UP0301H-E/TR	UP0361H-E/TR	UP0481H-E/TR	UP0561H-E/TR	
Capacity code	hp	1	1.25	1.7	2	2.5	3	3.2	4	5	6
Cooling	kW	2.8	3.6	4.5	5.6	7.1	8.0	9.0	11.2	14.0	16.0
Heating	kW	3.2	4.0	5.0	6.3	8.0	9.0	10.0	12.5	16.0	18.0
Running current		0.18	0.18	0.2	0.26	0.38	0.48	0.6	0.94	0.96	0.97
Power consumption	W	20	20	18	26	42	54	68	125	135	137
Starting current	A	0.27	0.27	0.30	0.39	0.57	0.72	0.90	1.41	1.44	1.46

**4-WAY SMART CASSETTE Physical data**

Indoor unit	MMU- UP0091H-E/TR	UP0121H-E/TR	UP0151H-E/TR	UP0181H-E/TR	UP0241H-E/TR	UP0271H-E/TR	UP0301H-E/TR	UP0361H-E/TR	UP0481H-E/TR	UP0561H-E/TR	
Standard air flow	H/M+/M/ L+/L	m <sup>3</sup> /h 846/792/768/ 738/708	846/792/768/ 738/708	1060/960/920/ 860/800	1260/1160/1100/ 1040/940	1580/1440/1300/ 1210/1120	1770/1590/1380/ 1320/1250	1940/1770/1520/ 1450/1400	2184/1848/1596/ 1356/1260	2262/1998/1740/ 1470/1368	2262/2034/1782/ 1512/1404
Sound pressure level	H/M/L	dB(A) 30/29/28/ 27/26	30/29/28/ 27/26	32/30/30/ 29/28	36/34/33/ 32/31	41/39/37/ 35/35	42/40/37/ 36/35	44/42/39/ 38/37	45/41/38/ 36/32	46/43/39/ 37/33	46/43/40/ 38/35
Sound power level	H/M+/M/ L+/L	dB(A) 45/44/43/ 42/42	45/44/43/ 42/42	46/45/44/ 43/42	50/48/47/ 46/45	55/53/51/ 49/48	56/54/51/ 50/49	58/56/53/ 52/51	60/56/53/ 50/48	61/57/54/ 52/49	61/58/55/ 53/51
Outer dimension	Main unit	H x L x P	mm	256 x 840 x 840	256 x 840 x 840	319 x 840 x 840	319 x 840 x 840	319 x 840 x 840	319 x 840 x 840	319 x 840 x 840	319 x 840 x 840
	Ceiling panel	H x L x P	mm	30 x 950 x 950	30 x 950 x 950	30 x 950 x 950	30 x 950 x 950	30 x 950 x 950	30 x 950 x 950	30 x 950 x 950	30 x 950 x 950
Total weight	Main unit	kg	18	18	25	25	25	25	25	25	25
	Ceiling panel	kg	5	5	5	5	5	5	5	5	5
Appearance	Main unit	Heat-insulating material attached Zinc hot dipping steel plate									
	Ceiling panel	Model	RBC-U41PG(W)-E								
		Panel color	White (2.5GY9.0/0.5)								
Connecting pipe	Gas pipe	inch	3/8"	3/8"	1/2"	1/2"	5/8"	5/8"	5/8"	5/8"	5/8"
	Liquid pipe	inch	1/4"	1/4"	1/4"	1/4"	3/8"	3/8"	3/8"	3/8"	3/8"
	Drain port (Outside dia.)	mm	25 (Polyvinyl chloride tube)								
Power supply	1 phase 50Hz 230V(220V-240V) - Separate power supply for indoor units is required.										